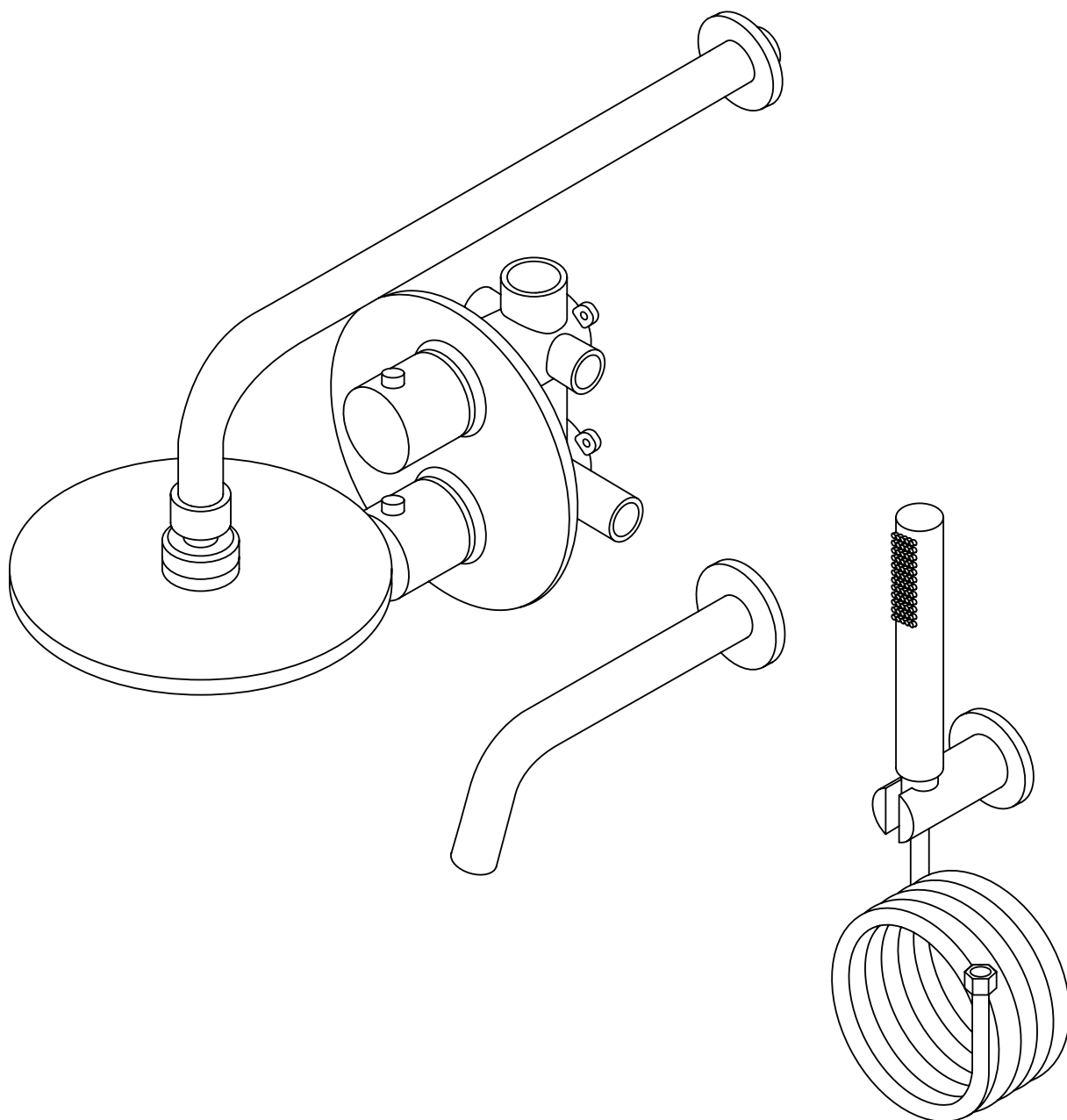


LUXE

LUS300

3 WAY THERMOSTATIC SHOWER WITH HANDHELD SHOWER & BATH SPOUT



EN INSTALLATION AND CARE GUIDE

Please retain for future reference

LUSSO

INTRODUCTION

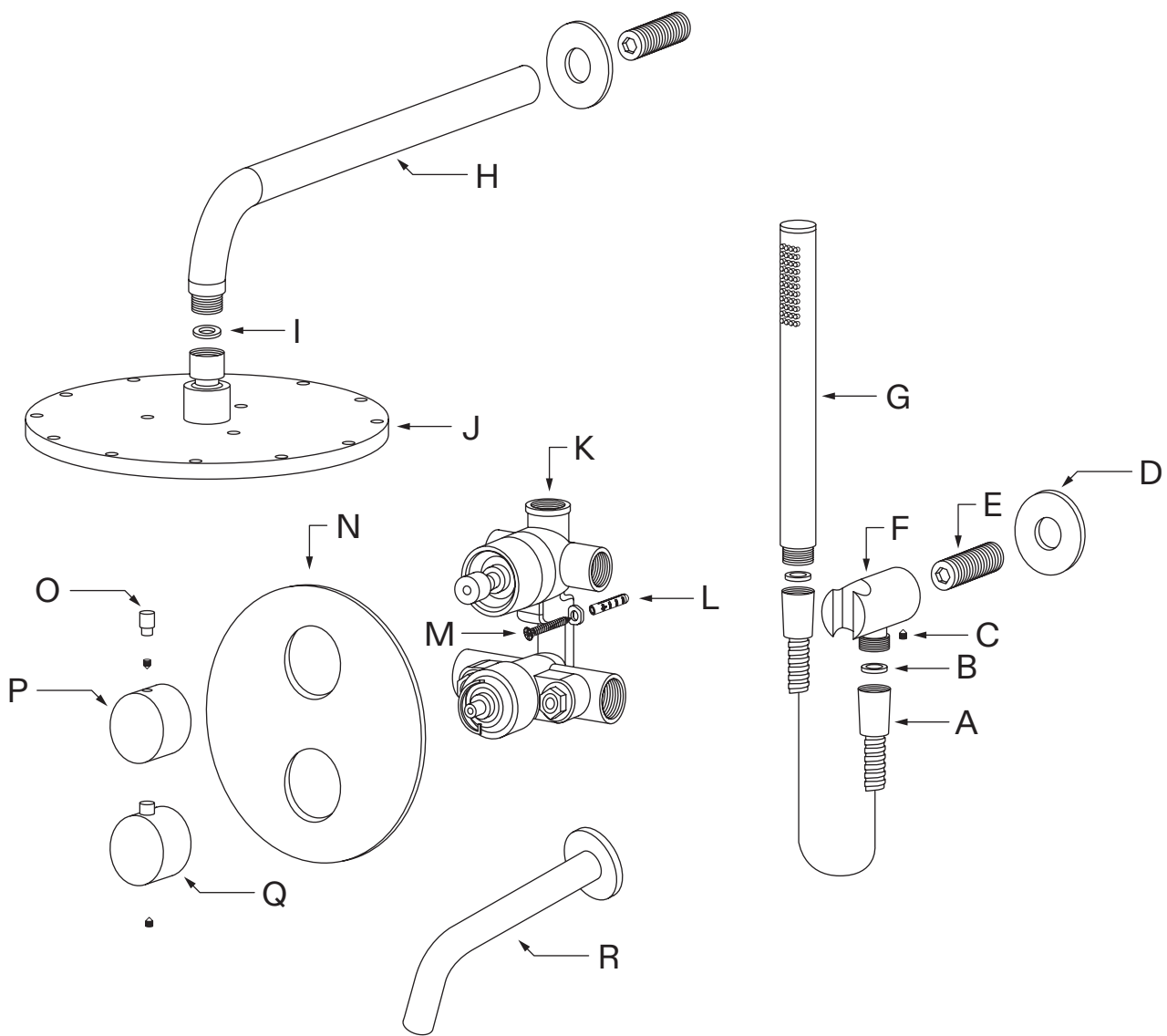
Thank you for purchasing the Luxe 3 Way Thermostatic Shower with Handheld Shower & Bath Spout.

Please read this guide carefully before installing, using and cleaning this product, and retain it for future reference. Please also note that this shower has been fully tested before being dispatched, which may mean there is water residue on some of the parts.

If you have any queries in relation to this product or guide, please contact our Customer Service team on 020 3370 4057.

PRODUCT KIT

A	Handset Hose	J	Shower Head
B	Compression Olive (x2)	K	Valve
C	Grub Screw (x3)	L	Bolt (x2)
D	Back Ring (x2)	M	Screw (x2)
E	Coupling (x2)	N	Backplate
F	Handset Bracket	O	Pointer Button
G	Handset	P	Diverter Lever
H	Shower Arm	Q	Temperature Lever
I	Filter (Installed)	R	Bath Spout



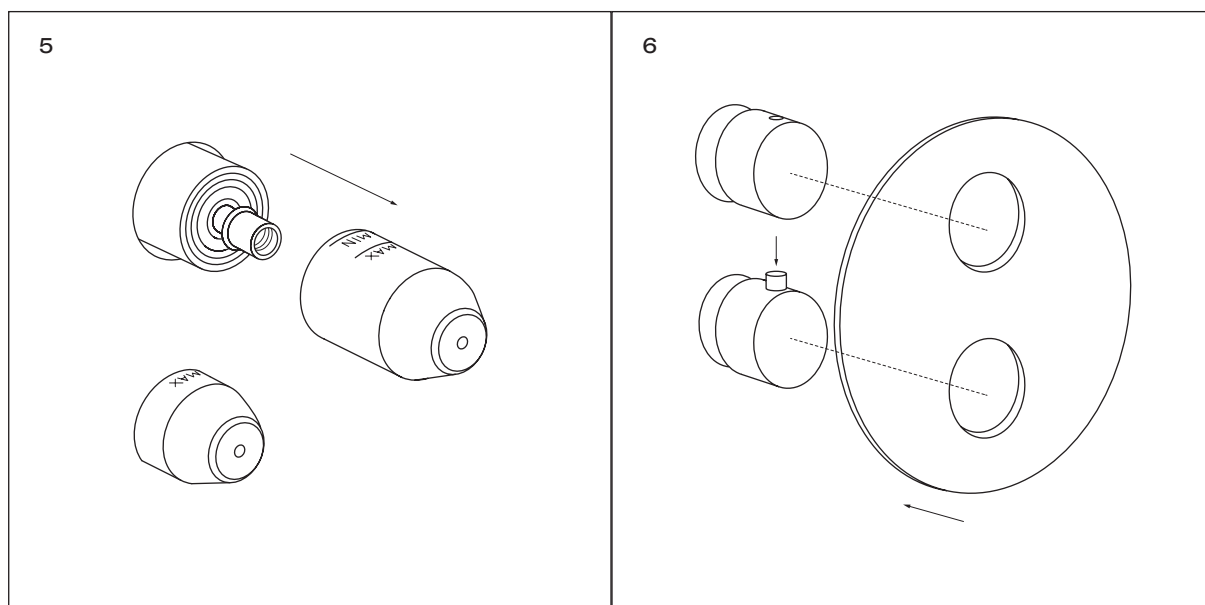
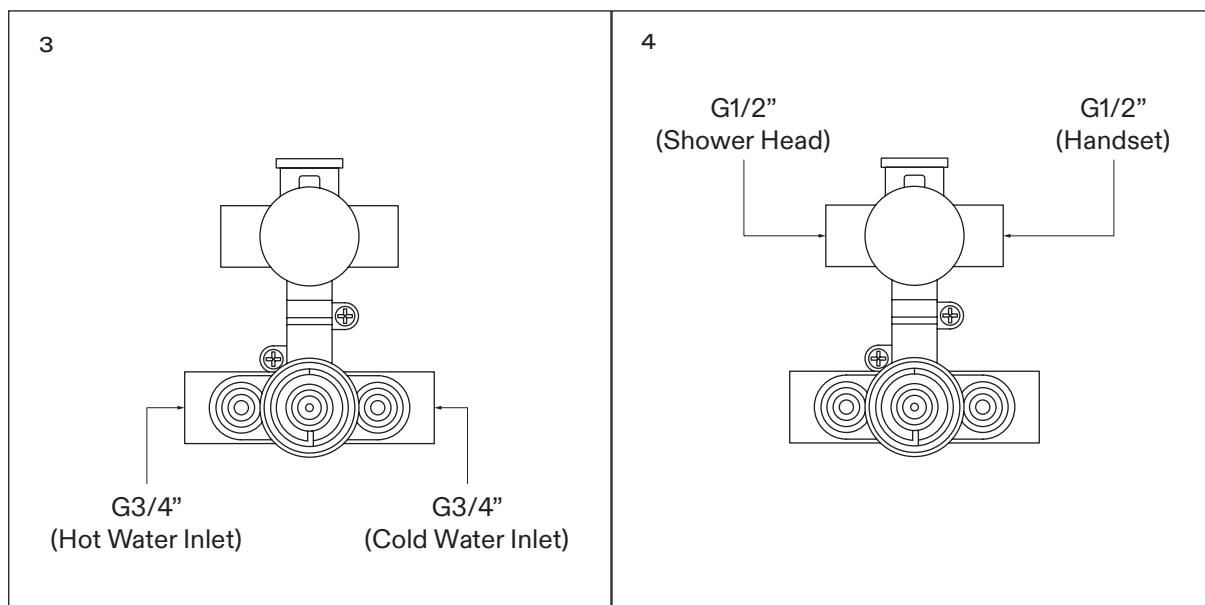
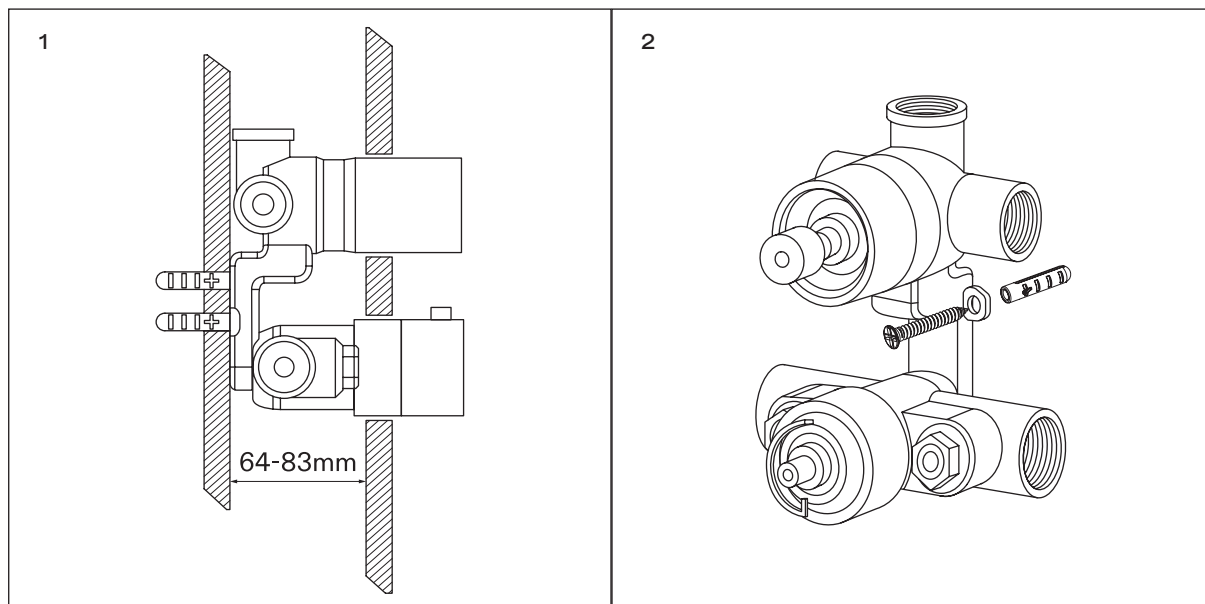
INSTALLATION STEPS

Before installation, please note that this shower is designed for concealed wall installation only, and we recommend that it is installed by a fully qualified plumber.

It is suitable for use on all boiler systems including pumped, gravity and combination boilers to a maximum pressure of 5 bar - pressure above this may require the fitting of reducer valves.

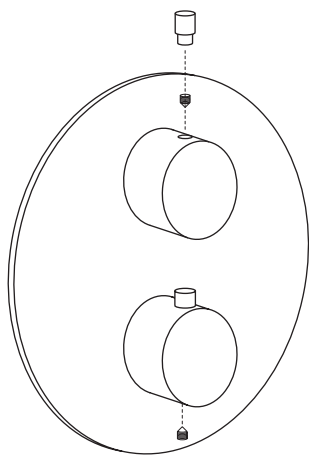
Please also note that failure to flush your plumbing system as part of the installation process will void the product guarantee. In addition, you must fully test the product before tiling and/or plastering, etc as Lusso will not be held responsible for any costs involved in the removal of the shower if you find there is a fault.

- 1** Make a recess in the wall to house the valve - this needs to be between 64mm and 83mm deep.
- 2** Secure the valve into the wall using the provided bolts and screws, ensuring that there's no movement on the valve once it's fixed into place.
- 3** Connect the hot and cold water to the correct inlets.
- 4** Make the plumbing connections to the outlets, then turn on the water supply and check for leaks.
- 5** Carry out required tiling/wall coverage while making sure that the valve protection sleeves remain in place, then remove the sleeves once complete.
- 6** Next, carefully slide the backplate over the valve while pressing the temperature lever button, taking care not to scratch the finish. During this step, you can also apply some water along the edge of the backplate if the olives are unsmooth.
- 7** Install the diverter lever, making sure that the pointers are upward and the lever is not turned until the shower is fully installed.
- 8** Finally, install the outlet parts and bath spout to complete the installation.

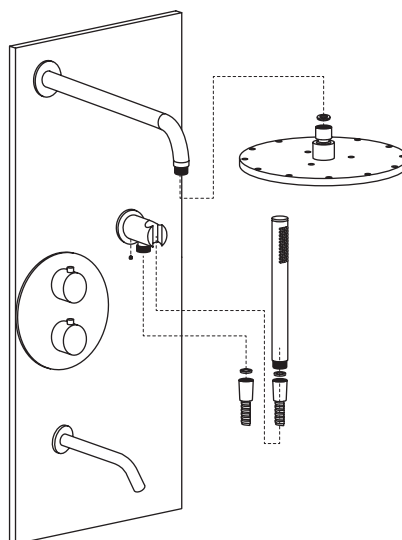


CONTINUED OVERLEAF

7



8



TROUBLESHOOTING

Why is the shower producing hot water when cold is selected, and vice versa?

It's likely that the hot and cold pipes have not been connected the right way around - please check and amend.

Why is the shower only running either hot water or cold water, but not both?

If this occurs, check that the lever positioning ring is installed and set correctly - the lug section should be vertically upward.

Why is there a leak from the valve when it's in the off position?

In this instance, it's likely that there is debris in the diverter valve which needs to be removed.

What could cause a fluctuating flow rate or low/no flow from the valve?

This may be due to either a blockage in the system or incorrect operating conditions.

How do I clean or replace the cartridge?

This can be caused by water pressure that's over 5 bar or under 0.5 bar, or by debris in the valve resulting from failure to properly flush existing pipework prior to installation.

CARE INSTRUCTIONS

To clean and maintain the flawless finish of this product, please follow the below instructions. Improper maintenance will void your product guarantee.

- ✓ Rinse the surface of the shower with clean water.
- ✓ Dry with a soft cloth.
- ✓ Use a neutral cleanser without coarse grain powder to remove surface marks.
- ✗ Do not use acidic cleansers.
- ✗ Do not use abrasive cleansers or cloths.

Go to Lusso.com to activate your guarantee.

LUSO

Customer Care: 020 3370 4057

International: +44 20 3370 4057