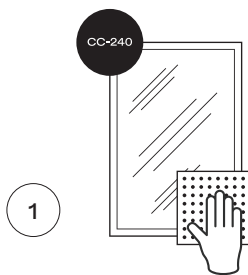


LUSO

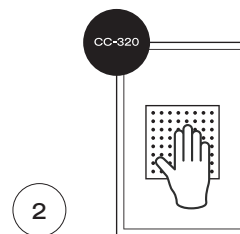
HOW TO PAINT YOUR PRIMED LUSO VANITY UNIT

MATERIAL KIT NEEDED

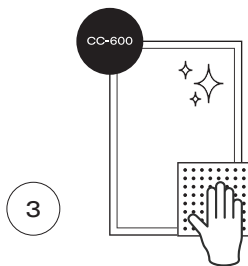
Installation manual x 1
Sandpaper CC-240 x 1
Sandpaper CC-320 x 1
Sandpaper CC-600 x 1



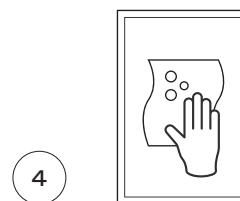
Use the CC-240 sandpaper to sand the surface of your cabinet. Sand the top surface until there is visible sand marks in the surface. Please pay attention to sanding the corners.



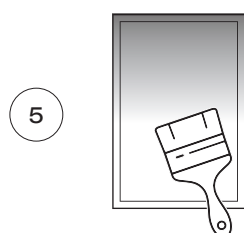
Use the CC-320 sandpaper to sand the cabinet. This time you need to make sure you remove the sand marks from the surface.



Use the CC-600 sandpaper to sand the cabinet. This time you need to make sure the surface is very smooth. Make sure you get into the corners.



Clean the product with a damp cloth and be sure to remove any dust particles. Dry the cabinet with a soft cloth.



You are now ready to paint your cabinet. We recommend Eggshell paint for a matte finish.