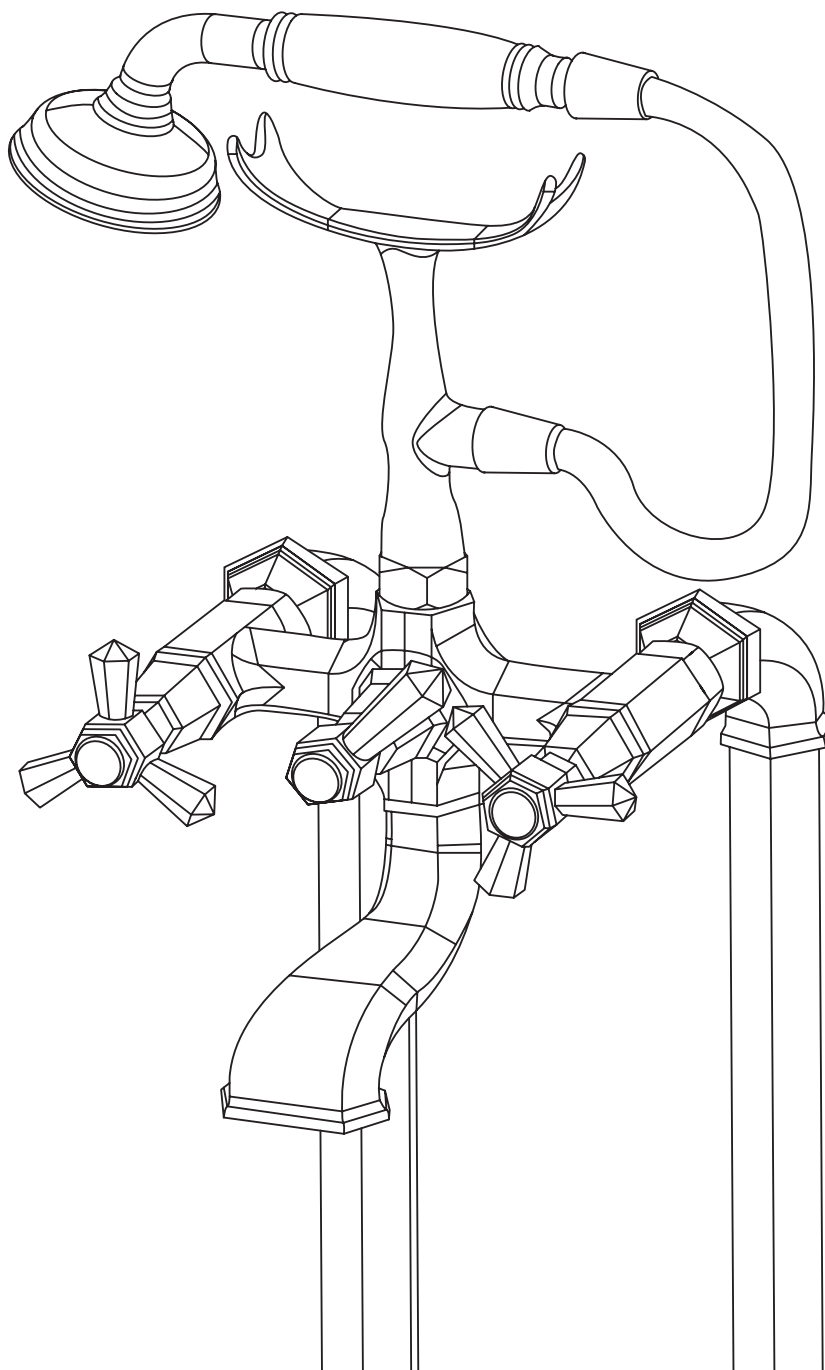


ETON

5305

FREESTANDING BATH SHOWER TAP



EN INSTALLATION AND CARE GUIDE

Please retain for future reference

LUSO

INTRODUCTION

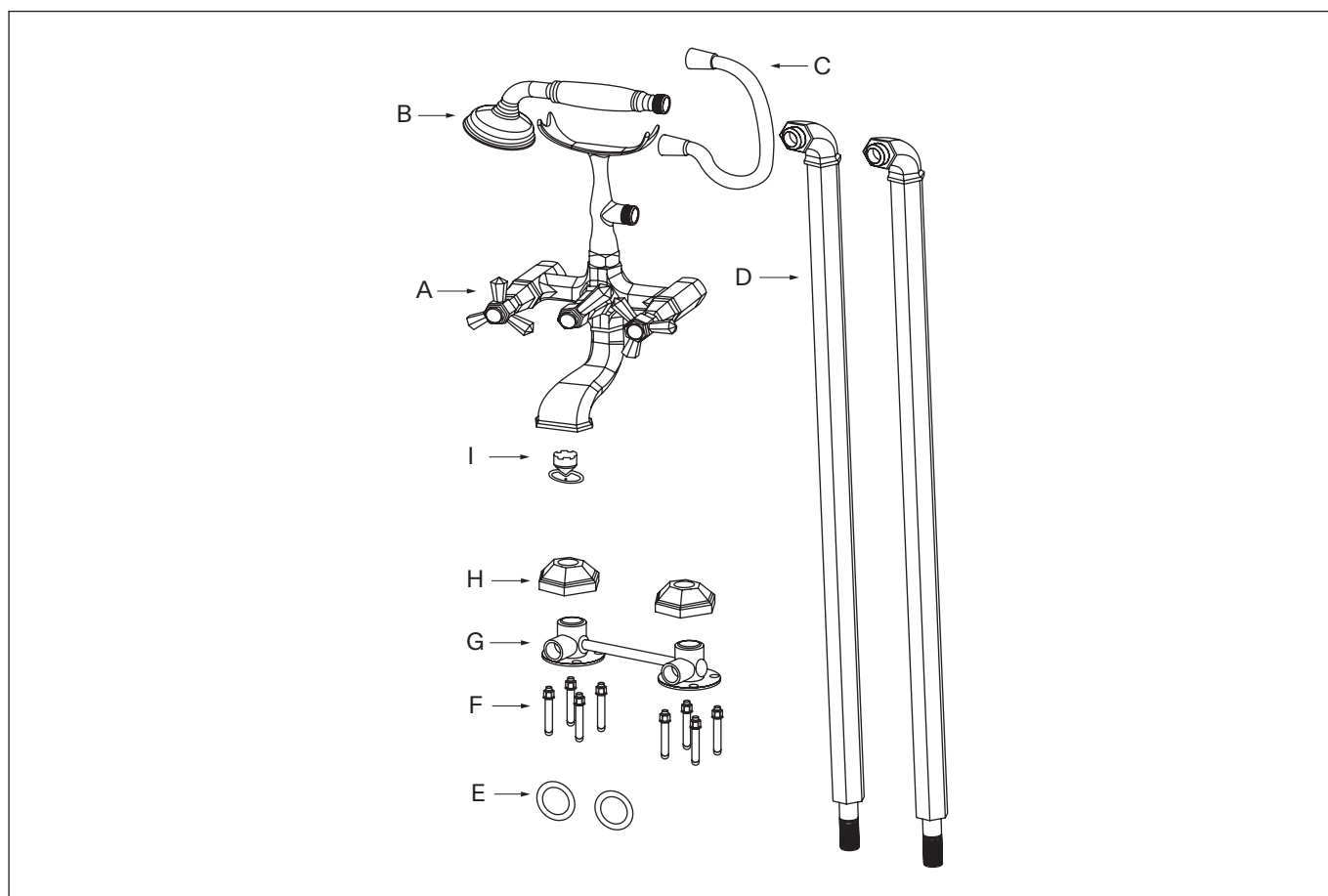
Thank you for purchasing the Eton Freestanding Bath Shower Tap.

Please read this guide carefully before installing, using and cleaning this product, and retain it for future reference. Please also note that this mixer tap has been fully tested before being dispatched, which may mean there is water residue on some of the parts.

If you have any queries in relation to this product or guide, please contact our Customer Service team on 020 3370 4057.

PRODUCT KIT

A	Bath Mixer	F	Screws & Nuts (x8)
B	Handset	G	Embedded Base
C	1.5mm Handset Hose	H	Base Cover (x2)
D	Freestanding Legs (x2)	I	Aerator Key
E	Seal Gaskets (x2)		



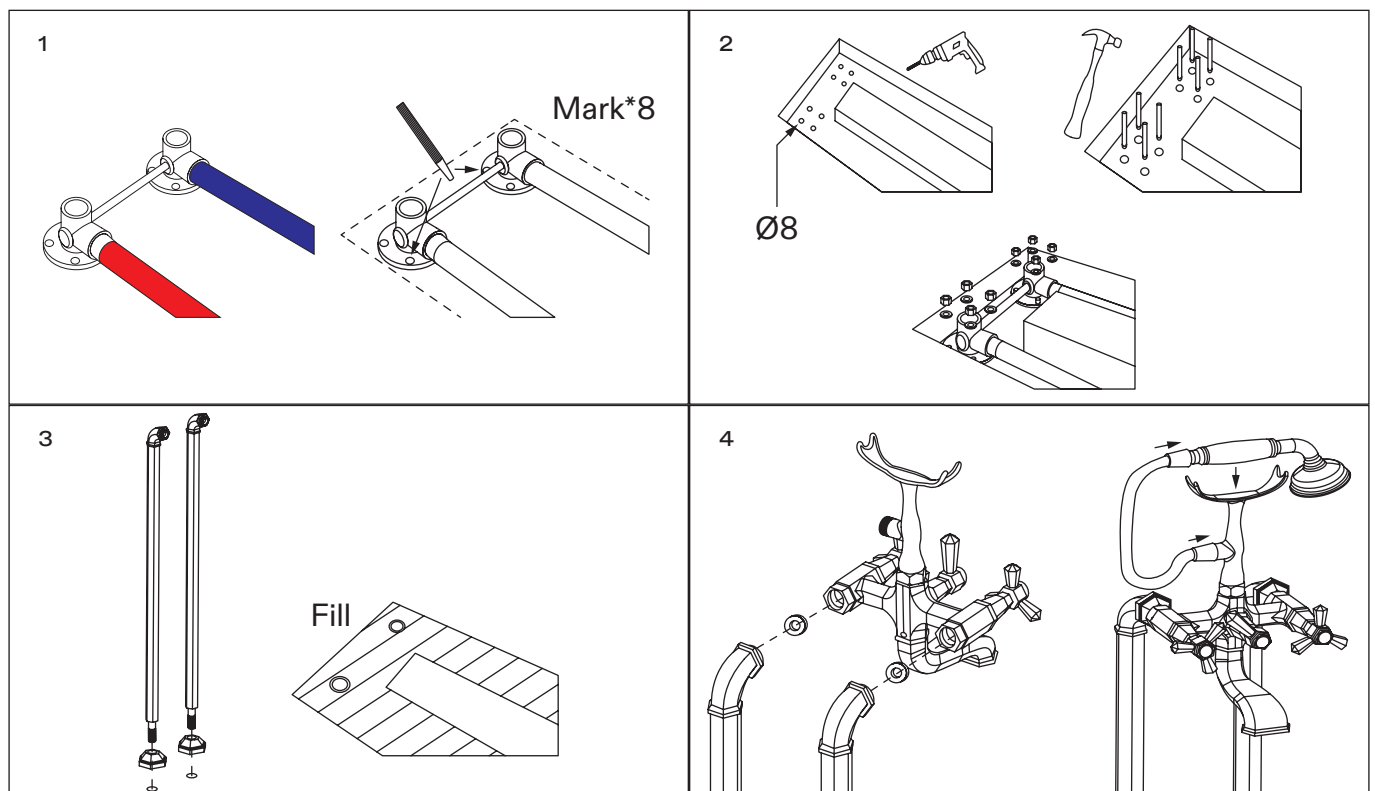
INSTALLATION STEPS

Before installation, please note that this tap is designed for floor mounting only, and we recommend that it is installed by a fully qualified plumber.

It is suitable for use on all boiler systems including pumped, gravity and combination boilers to a maximum pressure of 5 bar - pressure above this may require the fitting of reducer valves.

Please also note that failure to flush your plumbing system as part of the installation process will void the product guarantee. In addition, you must fully test the product before tiling and/or plastering, etc as Lusso will not be held responsible for any costs involved in the removal of the tap if you find there is a fault.

- 1 Carefully check the dimension drawing and mark the position for the tap.
- 2 Install your hot and cold water feeds within the floor and connect the embedded base. Fix the base into place using the provided screws and nuts.
- 3 Once tiling and cleaning work is completed, unscrew the protective cap on the base then install base covers and legs, sealing with PTFE tape.
- 4 Position the seal gaskets inside the mixer feeds and screw the mixer to the legs before connecting the handset and hose.



CARE INSTRUCTIONS

To clean and maintain the flawless finish of this product, please follow the below instructions. Improper maintenance will void your product guarantee.

✓ Clean with a damp cloth.

✗ Do not use acidic cleansers.

✗ Do not use abrasive cleansers or cloths.

Go to Lusso.com to activate your guarantee.

TROUBLESHOOTING

Why is the tap producing hot water when cold is selected, and vice versa?

It's likely that the hot and cold pipes have not been connected the right way around - please check and amend.

There is a leak from the top of the tap - what should I do?

In this instance, it's likely that the cartridge has become loose and needs to be reinstalled. To do this, open the lever cap, unscrew the lever shield, and reinstall the cartridge.

What could cause a fluctuating flow rate or low/no flow from the valve?

This may be due to either a blockage in the system, incorrect operating conditions, or a clog in the aerator. To unclog the aerator, simply unscrew it, rinse it with water, and reinstall it - if the problem persists, please consult with a qualified plumber.

LUSO

Customer Care: 020 3370 4057

International: +44 20 3370 4057