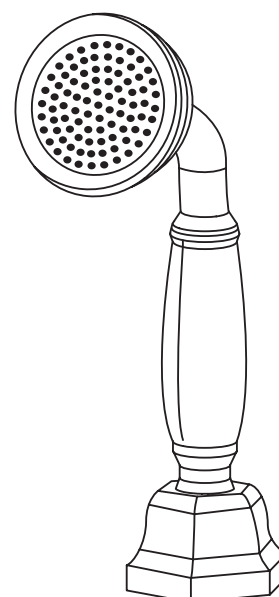
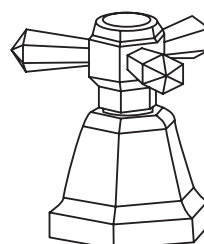
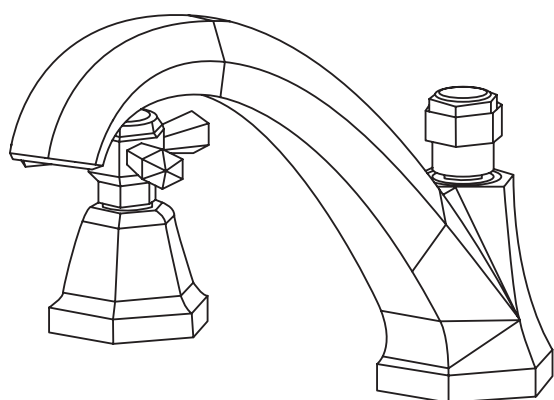


# ETON

5306

## DECK MOUNTED BATH SHOWER TAP



### EN INSTALLATION AND CARE GUIDE

Please retain for future reference

# LUSSO

# INTRODUCTION

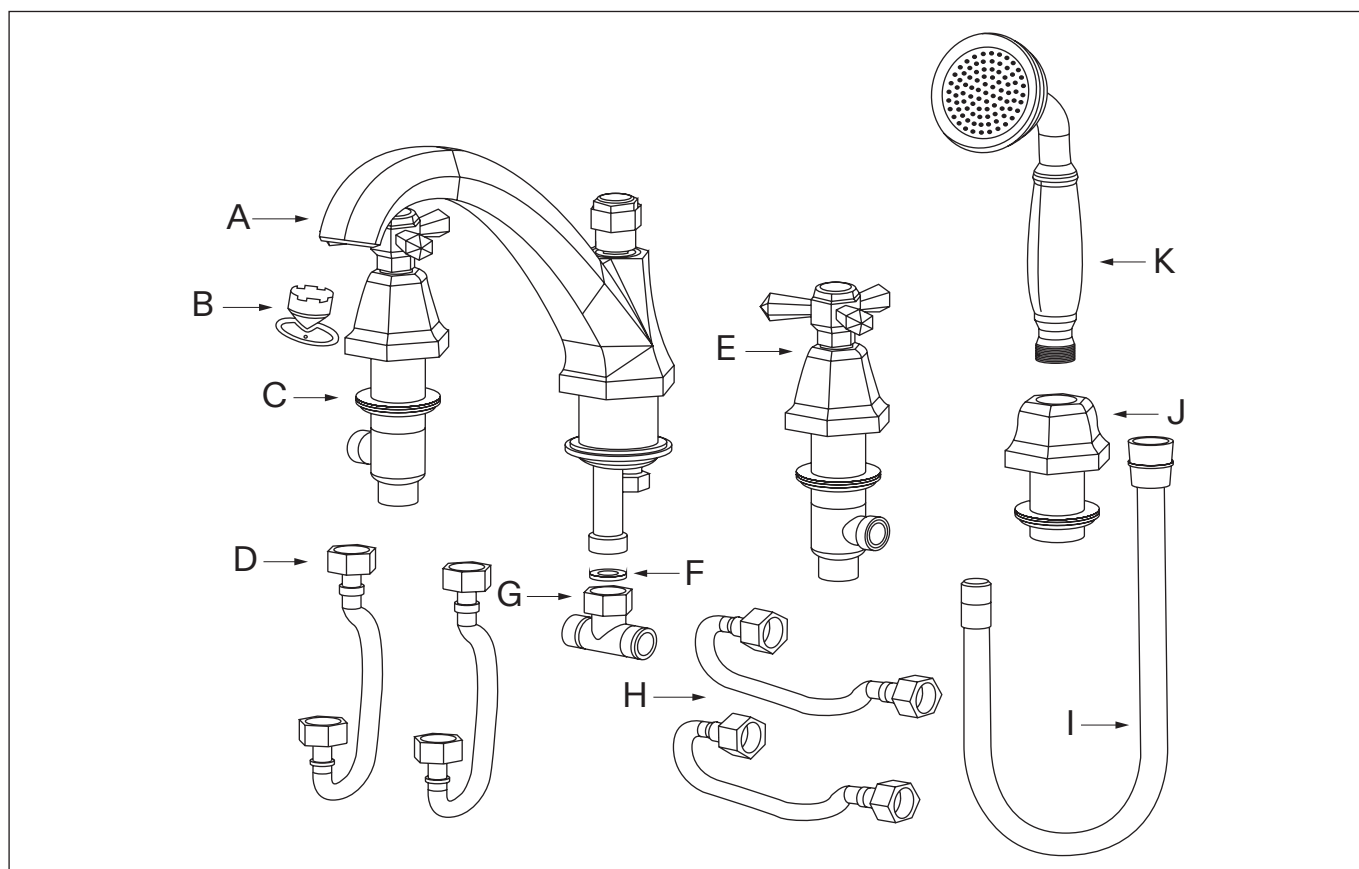
Thank you for purchasing the Eton Freestanding Bath Shower Tap.

Please read this guide carefully before installing, using and cleaning this product, and retain it for future reference. Please also note that this mixer tap has been fully tested before being dispatched, which may mean there is water residue on some of the parts.

If you have any queries in relation to this product or guide, please contact our Customer Service team on 020 3370 4057.

## PRODUCT KIT

- |          |                     |          |                      |
|----------|---------------------|----------|----------------------|
| <b>A</b> | Spout               | <b>G</b> | T-Piece              |
| <b>B</b> | Aerator Key         | <b>H</b> | Blue Feed Hoses (x2) |
| <b>C</b> | Hot Water Handle    | <b>I</b> | Handset Hose         |
| <b>D</b> | Red Feed Hoses (x2) | <b>J</b> | Handset Bracket      |
| <b>E</b> | Cold Water Handle   | <b>K</b> | Handset              |
| <b>F</b> | Gasket              |          |                      |



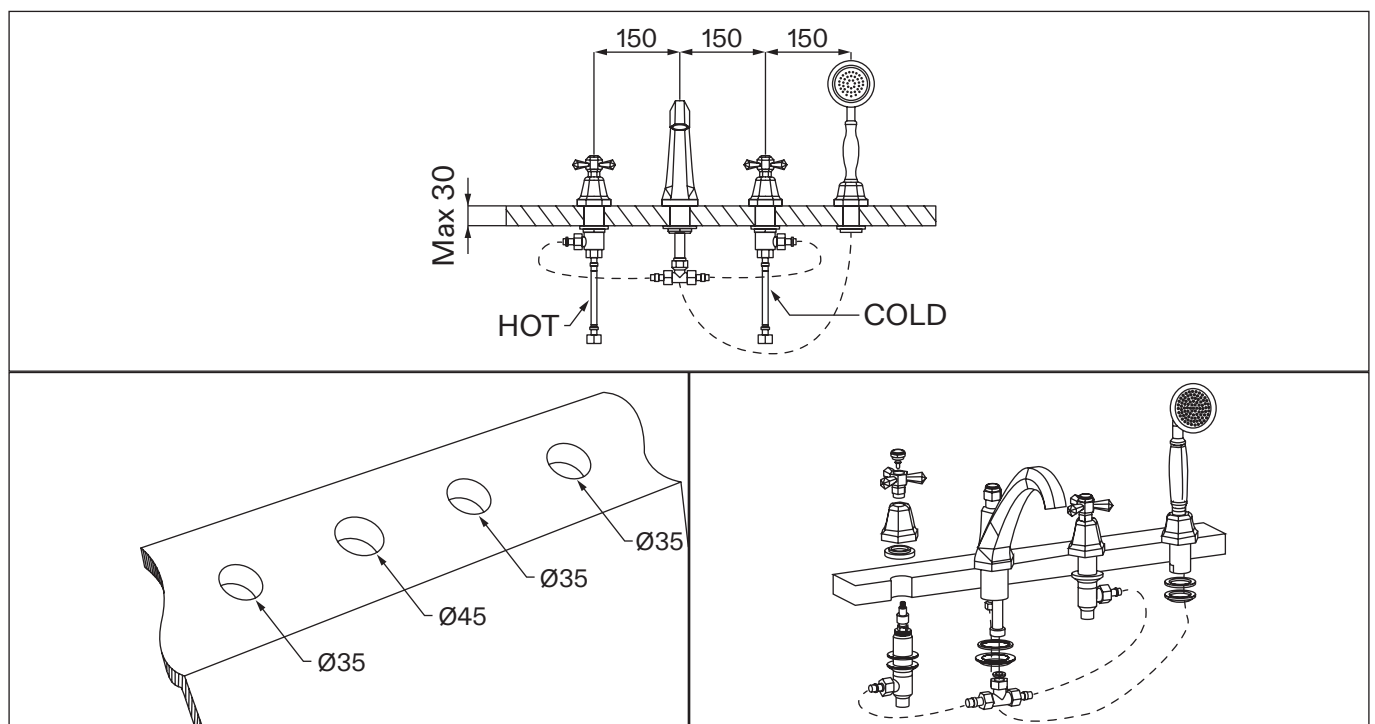
# INSTALLATION STEPS

Before installation, please note that this tap is designed for deck mounting only, and we recommend that it is installed by a fully qualified plumber.

It is suitable for use on all boiler systems including pumped, gravity and combination boilers to a maximum pressure of 5 bar - pressure above this may require the fitting of reducer valves.

Please also note that failure to flush your plumbing system as part of the installation process will void the product guarantee. In addition, you must fully test the product before tiling and/or plastering, etc as Lusso will not be held responsible for any costs involved in the removal of the tap if you find there is a fault.

- 1 Carefully check the dimension drawing and mark the position for the taps. Next, install the levers by unscrewing the valves from the handle combos, positioning the valves onto the surface, and then fixing into place by screwing the brass nuts into position on top and underneath. Screw the shields onto the surface, screw the handles into place, and add the decorative caps.
- 2 To install the spout, position it onto the surface, slide the washer and retaining plate over the fixing rods from underneath, then screw the nuts onto the rods to hold the spout in place.
- 3 Install the shower handset and connect the handset hose to the diverter. Finally, connect the T-piece to the spout, connect the feed hoses to each part and test the tap.



# CARE INSTRUCTIONS

To clean and maintain the flawless finish of this product, please follow the below instructions. Improper maintenance will void your product guarantee.

✓ Clean with a damp cloth.

✗ Do not use acidic cleansers.

✗ Do not use abrasive cleansers or cloths.

Go to [Lusso.com](https://Lusso.com) to activate your guarantee.

# TROUBLESHOOTING

## **Why is the tap producing hot water when cold is selected, and vice versa?**

It's likely that the hot and cold pipes have not been connected the right way around - please check and amend.

## **There is a leak from the top of the tap - what should I do?**

In this instance, it's likely that the cartridge has become loose and needs to be reinstalled. To do this, open the lever cap, unscrew the lever shield, and reinstall the cartridge.

## **What could cause a fluctuating flow rate or low/no flow from the valve?**

This may be due to either a blockage in the system, incorrect operating conditions, or a clog in the aerator. To unclog the aerator, simply unscrew it, rinse it with water, and reinstall it - if the problem persists, please consult with a qualified plumber.

# LUSO

Customer Care: 020 3370 4057

International: +44 20 3370 4057