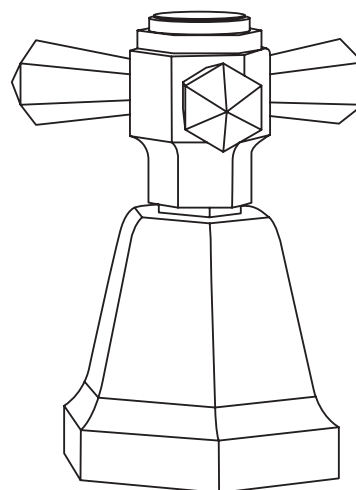
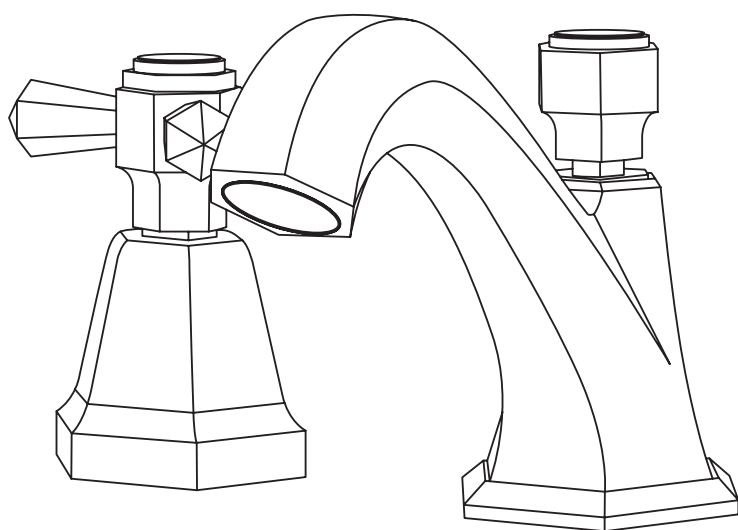


ETON

5303

DECK MOUNTED 3-HOLE BASIN MIXER TAP



EN
INSTALLATION
AND CARE GUIDE

Please retain for future reference

LUSO

INTRODUCTION

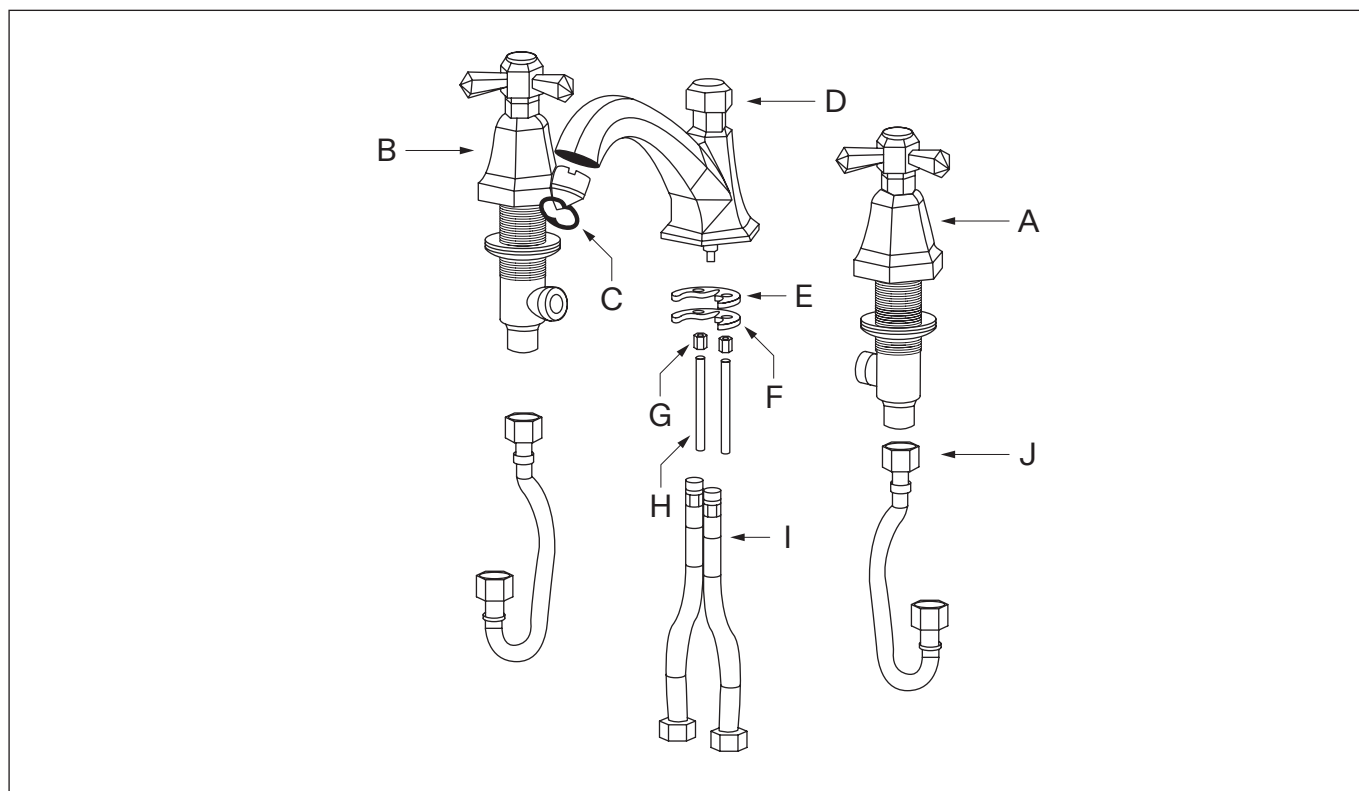
Thank you for purchasing the Eton Deck Mounted 3-Hole Basin Mixer Tap.

Please read this guide carefully before installing, using and cleaning this product, and retain it for future reference. Please also note that this mixer tap has been fully tested before being dispatched, which may mean there is water residue on some of the parts.

If you have any queries in relation to this product or guide, please contact our Customer Service team on 020 3370 4057.

PRODUCT KIT

- | | | | |
|----------|-------------------|----------|--------------------------|
| A | Cold Water Handle | F | C-Shaped Retaining Plate |
| B | Hot Water Handle | G | Nuts (x2) |
| C | Aerator Key | H | Fixing Rods (x2) |
| D | Spout | I | Flexible Pipes (x2) |
| E | C-Shaped Washer | J | Feed Hoses (x2) |



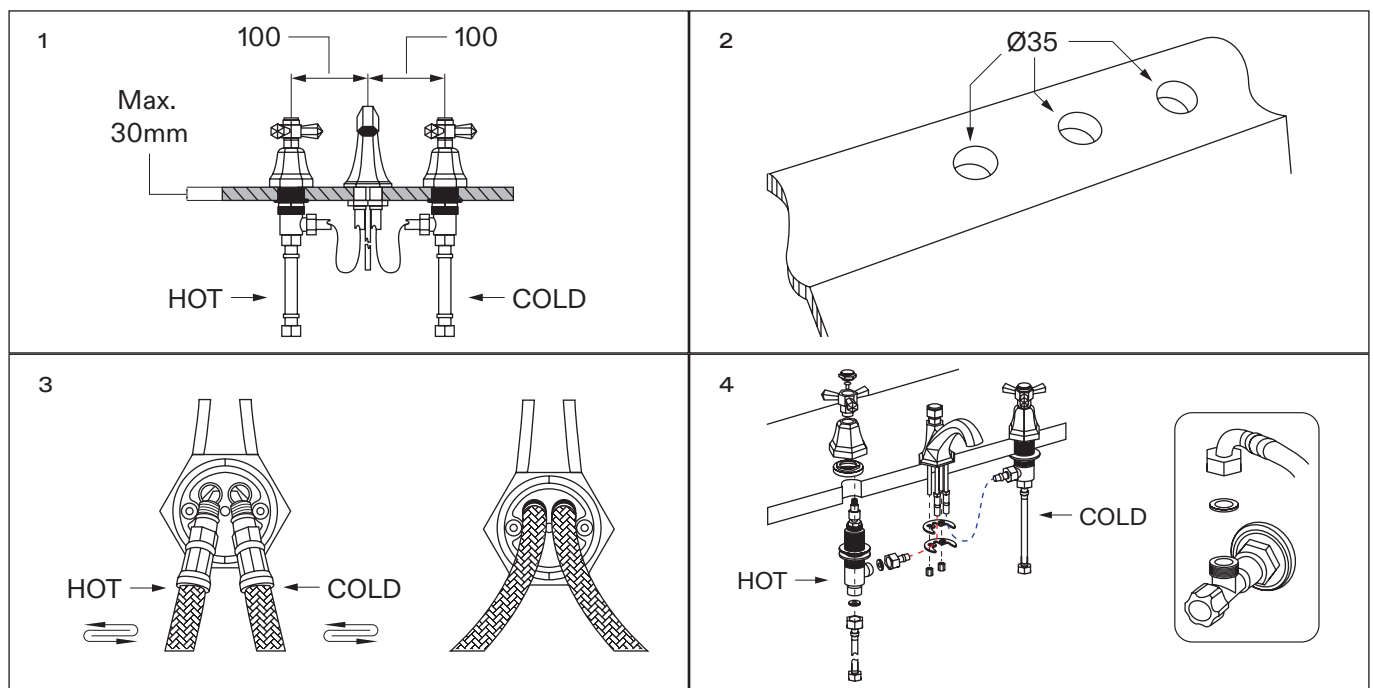
INSTALLATION STEPS

Before installation, please note that this tap is designed for deck mounting only, and we recommend that it is installed by a fully qualified plumber.

It is suitable for use on all boiler systems including pumped, gravity and combination boilers to a maximum pressure of 5 bar - pressure above this may require the fitting of reducer valves.

Please also note that failure to flush your plumbing system as part of the installation process will void the product guarantee. In addition, you must fully test the product before tiling and/or plastering, etc as Lusso will not be held responsible for any costs involved in the removal of the tap if you find there is a fault.

- 1 Prepare a 32mm diameter PVC tube (used for installation of flexible hose and cable) into the wall. Make a recess in the wall and embed the PVC tube, making sure that each end is flush with the wall.
- 2 First, install the levers. Remove the decorative cap and screw from each lever, unscrew the valves from the handle combos, then tighten each valve onto the kitchen surface by screwing them from the top and underneath. Next, screw the shields onto the surface, tighten the handles, and replace the decorative caps.
- 3 Put the flexible hose and cable into the embedded PVC tube, then fix the spout into position using the provided screw as shown in diagram.
- 4 Position the control box on the proposed wall and install with the provided screws.



CARE INSTRUCTIONS

To clean and maintain the flawless finish of this product, please follow the below instructions. Improper maintenance will void your product guarantee.

✓ Clean with a damp cloth.

✗ Do not use acidic cleansers.

✗ Do not use abrasive cleansers or cloths.

Go to Lusso.com to activate your guarantee.

TROUBLESHOOTING

Why is the tap producing hot water when cold is selected, and vice versa?

It's likely that the hot and cold pipes have not been connected the right way around - please check and amend.

There is a leak from the top of the tap - what should I do?

In this instance, it's likely that the cartridge has become loose and needs to be reinstalled. To do this, open the lever cap, unscrew the lever shield, and reinstall the cartridge.

What could cause a fluctuating flow rate or low/no flow from the valve?

This may be due to either a blockage in the system, incorrect operating conditions, or a clog in the aerator. To unclog the aerator, simply unscrew it, rinse it with water, and reinstall it - if the problem persists, please consult with a qualified plumber.

LUSO

Customer Care: 020 3370 4057

International: +44 20 3370 4057